

ELISA Kits for Oncology Research



- //
- 神经系统肿瘤
- 耳鼻喉部肿瘤
- 消化系统肿瘤
- 乳腺肿瘤
- 胸部肿瘤
- 皮肤及附件肿瘤
- 泌尿、生殖系统肿瘤
- 血液肿瘤（包括白血病、淋巴瘤等）
- 骨与软组织肿瘤
- 小儿肿瘤
- //

Focus on Lab Research Service For Life Science

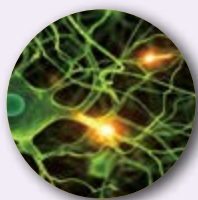
Elabscience®

Elabscience Biotechnology Co.,Ltd

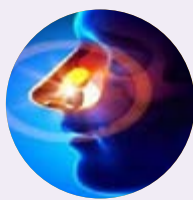
肿瘤科疾病

肿瘤学 (Oncology) 是一种研究肿瘤 (尤其是恶性肿瘤) 的病因、预防、诊断、治疗以及基础研究的综合性、独立性医学二级学科。

肿瘤的分类



神经系统肿瘤



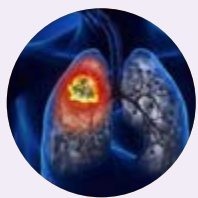
耳鼻喉部肿瘤



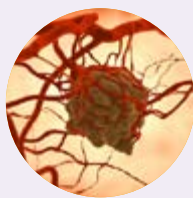
消化系统肿瘤



乳腺肿瘤



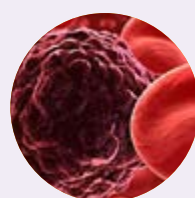
胸部肿瘤



皮肤及附件肿瘤



泌尿、生殖系统肿瘤



血液肿瘤
(包括白血病、淋巴瘤等)



骨与软组织肿瘤



小儿肿瘤

用于肿瘤疾病研究的 ELISA 试剂盒

Elabscience 根据往期文献将临床 10 类肿瘤中的 53 种肿瘤疾病 (肝癌、胃癌、白血病、淋巴肉瘤、癌性腹水等) 研究中的相关指标进行了整理, 便于肿瘤科疾病研究人员能快速查找并获取指标信息。请访问 Elabscience 官网 (www.elabscience.cn), 以获取详细产品信息。

肿瘤疾病研究中的热点指标:

| Cat. No. | Product Name | Detection Range | Sensitivity | Test Method |
|-------------|--|-------------------|-------------|-------------|
| E-EL-H0493c | Human AR(Androgen Receptor) ELISA Kit | 0.31--20 ng/mL | 0.19 ng/mL | Sandwich |
| E-EL-H0562c | Human BAX(Bcl-2 Associated X Protein) ELISA Kit | 0.78--50 ng/mL | 0.47 ng/mL | Sandwich |
| E-EL-H0114c | Human Bcl-2(B-cell Leukemia/Lymphoma 2) ELISA Kit | 0.16--10 ng/mL | 0.09 ng/mL | Sandwich |
| E-EL-H0483c | Human bFGF/FGF2(Basic Fibroblast Growth Factor) ELISA Kit | 125--8000 pg/mL | 75 pg/mL | Sandwich |
| E-EL-H1614c | Human BRAF(B-Raf Proto Oncogene Serine/Threonine Protein Kinase) ELISA Kit | 0.31--20 ng/mL | 0.19 ng/mL | Sandwich |
| E-EL-H2092c | Human CCND1(Cyclin D1) ELISA Kit | 0.31--20 ng/mL | 0.19 ng/mL | Sandwich |
| E-EL-H2323c | Human CDK4(Cyclin Dependent Kinase 4) ELISA Kit | 0.31--20 ng/mL | 0.19 ng/mL | Sandwich |
| E-EL-H2473c | Human CDKN1A(Cyclin Dependent Kinase Inhibitor 1A) ELISA Kit | 78.13--5000 pg/mL | 46.88 pg/mL | Sandwich |
| E-EL-H2327c | Human CDKN2A(Cyclin Dependent Kinase Inhibitor 2A) ELISA Kit | 0.63--40 ng/mL | 0.38 ng/mL | Sandwich |
| E-EL-H0666c | Human CTNN β 1(Catenin, Beta 1) ELISA Kit | 0.16--10 ng/mL | 0.09 ng/mL | Sandwich |
| E-EL-H0059c | Human EGF(Epidermal Growth Factor) ELISA Kit | 3.91--250 pg/mL | 2.34 pg/mL | Sandwich |
| E-EL-H0060c | Human EGFR(Epidermal Growth Factor Receptor) ELISA Kit | 0.31--20 ng/mL | 0.19 ng/mL | Sandwich |
| E-EL-H1133c | Human ER α (Estrogen Receptor Alpha) ELISA Kit | 62.5--4000 pg/mL | 37.5 pg/mL | Sandwich |
| E-EL-H0356c | Human FGFR3(Fibroblast Growth Factor Receptor 3) ELISA Kit | 0.16--10 ng/mL | 0.09 ng/mL | Sandwich |
| E-EL-H0108c | Human IFN- γ (Interferon Gamma) ELISA Kit | 15.63--1000 pg/mL | 9.38 pg/mL | Sandwich |
| E-EL-H0149c | Human IL-1 β (Interleukin 1 Beta) ELISA Kit | 7.81--500 pg/mL | 4.69 pg/mL | Sandwich |
| E-EL-H0099c | Human IL-2(Interleukin 2) ELISA Kit | 7.81--500 pg/mL | 4.69 pg/mL | Sandwich |
| E-EL-H0102c | Human IL-6(Interleukin 6) ELISA Kit | 7.81--500 pg/mL | 4.69 pg/mL | Sandwich |
| E-EL-H0086c | Human IGF-1(Insulin-like Growth Factor 1) ELISA Kit | 1.56--100 ng/mL | 0.94 ng/mL | Sandwich |
| E-EL-H0435c | Human IGF-2(Insulin Like Growth Factor 2) ELISA Kit | 0.31--20 ng/mL | 0.19 ng/mL | Sandwich |
| E-EL-H2182c | Human KRAS(V-Ki-Ras2 Kirsten Rat Sarcoma Viral Oncogene Homolog) ELISA Kit | 0.31--20 ng/mL | 0.19 ng/mL | Sandwich |
| E-EL-H1445c | Human MMP-2(Matrix Metalloproteinase 2) ELISA Kit | 0.78--50 ng/mL | 0.47 ng/mL | Sandwich |
| E-EL-H1451c | Human MMP-9(Matrix Metalloproteinase 9) ELISA Kit | 31.25--2000 pg/mL | 18.75 pg/mL | Sandwich |
| E-EL-H0616c | Human MUC1(Mucin 1) ELISA Kit | 0.16--10 ng/mL | 0.09 ng/mL | Sandwich |
| E-EL-H2214c | Human PDGFR α (Platelet Derived Growth Factor Receptor Alpha) ELISA Kit | 0.16--10 ng/mL | 0.09 ng/mL | Sandwich |
| E-EL-H1846c | Human PTGS2/COX-2(Prostaglandin Endoperoxide Synthase 2) ELISA Kit | 0.31--20 ng/mL | 0.19 ng/mL | Sandwich |
| E-EL-H1932c | Human RB1(Retinoblastoma Protein 1) ELISA Kit | 0.16--10 ng/mL | 0.09 ng/mL | Sandwich |
| E-EL-H0933c | Human Smad4/MADH4(Mothers Against Decapentaplegic Homolog 4) ELISA Kit | 0.31--20 ng/mL | 0.19 ng/mL | Sandwich |
| E-EL-H2132c | Human STAT3(Signal Transducer and Activator of Transcription 3) ELISA Kit | 0.31--20 ng/mL | 0.19 ng/mL | Sandwich |
| E-EL-H0706c | Human TERT(Telomerase Reverse Transcriptase) ELISA Kit | 0.16--10 ng/mL | 0.09 ng/mL | Sandwich |
| E-EL-H5634c | Human TGFBR2(TGF-beta receptor type 2) ELISA Kit | 0.78--50 ng/mL | 0.47 ng/mL | Sandwich |
| E-EL-H0110c | Human TGF- β 1(Transforming Growth Factor Beta 1) ELISA Kit | 31.25--2000 pg/mL | 18.75 pg/mL | Sandwich |
| E-EL-H0109c | Human TNF- α (Tumor Necrosis Factor Alpha) ELISA Kit | 7.81--500 pg/mL | 4.69 pg/mL | Sandwich |
| E-EL-H0910c | Human TP53(Tumor Protein p53) ELISA Kit | 78.13--5000 pg/mL | 46.88 pg/mL | Sandwich |

其他肿瘤疾病研究中的常用指标:

| Cat. No. | Product Name | Detection Range | Sensitivity | Test Method |
|-------------|---|-------------------|-------------|-------------|
| E-EL-H0530c | Human ABCG2(ATP Binding Cassette Transporter G2) ELISA Kit | 0.16--10 ng/mL | 0.09 ng/mL | Sandwich |
| E-EL-H0002c | Human ACE(Angiotensin I Converting Enzyme) ELISA Kit | 0.78--50 ng/mL | 0.47 ng/mL | Sandwich |
| E-EL-H1847c | Human ACP3/PAP(Prostatic Acid Phosphatase) ELISA Kit | 0.63--40 ng/mL | 0.38 ng/mL | Sandwich |
| E-EL-H1551c | Human ACP5(Tartrate Resistant Acid Phosphatase 5) ELISA Kit | 0.78--50 ng/mL | 0.47 ng/mL | Sandwich |
| E-EL-H0275c | Human ADM(Adrenomedullin) ELISA Kit | 15.63--1000 pg/mL | 9.38 pg/mL | Sandwich |
| E-EL-H0004c | Human ADP/Acrp30(Adiponectin) ELISA Kit | 0.78--50 ng/mL | 0.47 ng/mL | Sandwich |
| E-EL-H0071c | Human AFGF/FGF1(Acidic Fibroblast Growth Factor 1) ELISA Kit | 31.25--2000 pg/mL | 18.75 pg/mL | Sandwich |
| E-EL-H2181c | Human ALB(Albumin) ELISA Kit | 0.16--10 ng/mL | 0.09 ng/mL | Sandwich |
| E-EL-H0340c | Human ANG-R-Tie2(Angiopietin Receptor Tie2) ELISA Kit | 0.16--10 ng/mL | 0.09 ng/mL | Sandwich |
| E-EL-H0240c | Human ARO(Aromatase) ELISA Kit | 0.16--10 ng/mL | 0.09 ng/mL | Sandwich |
| E-EL-H0502c | Human ARRβ1(Arrestin Beta 1) ELISA Kit | 62.5--4000 pg/mL | 37.5 pg/mL | Sandwich |
| E-EL-H0518c | Human ATM(Ataxia Telangiectasia Mutated) ELISA Kit | 0.16--10 ng/mL | 0.09 ng/mL | Sandwich |
| E-EL-H0557c | Human Bcl-10(B-cell Lymphoma/Leukemia 10) ELIS Kit | 1.56--100 ng/mL | 0.94 ng/mL | Sandwich |
| E-EL-H0010c | Human BDNF(Brain Derived Neurotrophic Factor) ELISA Kit | 31.25--2000 pg/mL | 18.75 pg/mL | Sandwich |
| E-EL-H0011c | Human BMP-2(Bone Morphogenetic Protein 2) ELISA Kit | 62.5--4000 pg/mL | 37.5 pg/mL | Sandwich |
| E-EL-H0012c | Human BMP-4(Bone Morphogenetic Protein 4) ELISA Kit | 31.25--2000 pg/mL | 18.75 pg/mL | Sandwich |
| E-EL-H0017c | Human CASP3(Caspase 3) ELISA Kit | 0.31--20 ng/mL | 0.19 ng/mL | Sandwich |
| E-EL-H2093c | Human CCND2(Cyclin D2) ELISA Kit | 0.16--10 ng/mL | 0.09 ng/mL | Sandwich |
| E-EL-H1607c | Human CD34(Cluster Of Differentiation 34) ELISA Kit | 0.16--10 ng/mL | 0.09 ng/mL | Sandwich |
| E-EL-H0751c | Human CD99(Cluster of Differentiation 99) ELISA Kit | 0.16--10 ng/mL | 0.09 ng/mL | Sandwich |
| E-EL-H2322c | Human CDK2(Cyclin Dependent Kinase 2) ELISA Kit | 0.31--20 ng/mL | 0.19 ng/mL | Sandwich |
| E-EL-H0739c | Human CHGA(Chromogranin A/Pancreastatin) ELISA Kit | 62.5--4000 pg/mL | 37.5 pg/mL | Sandwich |
| E-EL-H0832c | Human CHGB(Chromogranin B) ELISA Kit | 62.5--4000 pg/mL | 37.5 pg/mL | Sandwich |
| E-EL-H2076c | Human CK-20/KRT20(Cytokeratin 20) ELISA Kit | 0.16--10 ng/mL | 0.09 ng/mL | Sandwich |
| E-EL-H0777c | Human COL2α1(Collagen Type II Alpha 1) ELISA Kit | 0.63--40 ng/mL | 0.38 ng/mL | Sandwich |
| E-EL-H0628c | Human CR(Calretinin) ELISA Kit | 0.31--20 ng/mL | 0.19 ng/mL | Sandwich |
| E-EL-H1144c | Human CRH(Corticotropin Releasing Hormone) ELISA Kit | 3.91--250 pg/mL | 2.34 pg/mL | Competitive |
| E-EL-H0018c | Human CTSB(Cathepsin B) ELISA Kit | 0.16--10 ng/mL | 0.09 ng/mL | Sandwich |
| E-EL-H0671c | Human CTSL(Cathepsin L) ELISA Kit | 62.5--4000 pg/mL | 37.5 pg/mL | Sandwich |
| E-EL-H2457c | Human CYP2E1(Cytochrome P450, family 2, subfamily E, polypeptide 1) ELISA Kit | 1.56--100 ng/mL | 0.94 ng/mL | Sandwich |
| E-EL-H0056c | Human Cyt-C(Cytochrome C) ELISA Kit | 78.13--5000 pg/mL | 46.88 pg/mL | Sandwich |
| E-EL-H1505c | Human Des(Desmin) ELISA Kit | 0.16--10 ng/mL | 0.09 ng/mL | Sandwich |
| E-EL-H2485c | Human DMBT1(Deleted In Malignant Brain Tumors 1) ELISA Kit | 0.31--20 ng/mL | 0.19 ng/mL | Sandwich |
| E-EL-H2495c | Human DUOX2(Dual Oxidase 2) ELISA Kit | 0.16--10 ng/mL | 0.09 ng/mL | Sandwich |

| Cat. No. | Product Name | Detection Range | Sensitivity | Test Method |
|-------------|---|----------------------|------------------|-------------|
| E-EL-H1629c | Human EGFR2(Epidermal Growth Factor Receptor 2) ELISA Kit | 125--8000 pg/mL | 75 pg/mL | Sandwich |
| E-EL-H0062c | Human ENG(Endoglin) ELISA Kit | 0.16--10 ng/mL | 0.09 ng/mL | Sandwich |
| E-EL-H3640c | Human EPO(Erythropoietin) ELISA Kit | 1.56--100 mIU/mL | 0.94 mIU/mL | Sandwich |
| E-EL-H0064c | Human ET-1(Endothelin 1) ELISA Kit | 1.25--80 pg/mL | 0.75 pg/mL | Sandwich |
| E-EL-H1771c | Human FAK(Focal Adhesion Kinase) ELISA Kit | 0.16--10 ng/mL | 0.09 ng/mL | Sandwich |
| E-EL-H0067c | Human FAS/CD95(Factor Related Apoptosis) ELISA Kit | 31.25--2000 pg/mL | 18.75 pg/mL | Sandwich |
| E-EL-H2266c | Human FBN1(Fibrillin 1) ELISA Kit | 0.31--20 ng/mL | 0.19 ng/mL | Sandwich |
| E-EL-H0074c | Human FGF21(Fibroblast Growth Factor 21) ELISA Kit | 31.25--2000 pg/mL | 18.75 pg/mL | Sandwich |
| E-EL-H0345c | Human FGFR1(Fibroblast Growth Factor Receptor 1) ELISA Kit | 0.16--10 ng/mL | 0.09 ng/mL | Sandwich |
| E-EL-H0158c | Human FGFR2(Fibroblast Growth Factor Receptor 2) ELISA Kit | 31.25--2000 pg/mL | 18.75 pg/mL | Sandwich |
| E-EL-H0878c | Human Flt3(FMS-like Tyrosine Kinase 3) ELISA Kit | 0.31--20 ng/mL | 0.19 ng/mL | Sandwich |
| E-EL-H0179c | Human FN(Fibronectin) ELISA Kit | 1.56--100 ng/mL | 0.94 ng/mL | Sandwich |
| E-EL-H0079c | Human G-CSF(Granulocyte Colony-stimulating Factor) ELISA Kit | 39.06--2500 pg/mL | 23.44 pg/mL | Sandwich |
| E-EL-H1495c | Human GDNF(Glial Cell Line Derived Neurotrophic Factor) ELISA Kit | 0.31--20 ng/mL | 0.19 ng/mL | Sandwich |
| E-EL-H1888c | Human GFAP(Glial Fibrillary Acidic Protein) ELISA Kit | 0.31--20 ng/mL | 0.19 ng/mL | Sandwich |
| E-EL-H0177c | Human GH(Growth Hormone) ELISA Kit | 78.13--5000 pg/mL | 46.88 pg/mL | Sandwich |
| E-EL-H1712c | Human GPC3(Glypican 3) ELISA Kit | 0.16--10 ng/mL | 0.09 ng/mL | Sandwich |
| E-EL-H0084c | Human HGF(Hepatocyte Growth Factor) ELISA Kit | 125--8000 pg/mL | 75 pg/mL | Sandwich |
| E-EL-H1277c | Human HIF-1 α (Hypoxia Inducible Factor 1 Alpha) ELISA Kit | 0.16--10 ng/mL | 0.09 ng/mL | Sandwich |
| E-EL-H1554c | Human HMGB-1(High mobility group protein B1) ELISA Kit | 31.25--2000 pg/mL | 18.75 pg/mL | Sandwich |
| E-EL-H2172c | Human HO1(Heme Oxygenase 1) ELISA Kit | 0.31--20 ng/mL | 0.19 ng/mL | Sandwich |
| E-EL-H0442c | Human IGFBP-1(Insulin-like Growth Factor Binding Protein 1) ELISA Kit | 0.16--10 ng/mL | 0.09 ng/mL | Sandwich |
| E-EL-H0087c | Human IGFBP-3(Insulin-like Growth Factor Binding Protein 3) ELISA Kit | 0.78--50 ng/mL | 0.47 ng/mL | Sandwich |
| E-EL-H0103c | Human IL-10(Interleukin 10) ELISA Kit | 7.81--500 pg/mL | 4.69 pg/mL | Sandwich |
| E-EL-H0151c | Human IL-12 p40(Interleukin 12 p40) ELISA Kit | 31.25--2000 pg/mL | 18.75 pg/mL | Sandwich |
| E-EL-H0150c | Human IL-12(Interleukin 12) ELISA Kit | 15.63--1000 pg/mL | 9.38 pg/mL | Sandwich |
| E-EL-H0104c | Human IL-13(Interleukin 13) ELISA Kit | 15.63--1000 pg/mL | 9.38 pg/mL | Sandwich |
| E-EL-H0222c | Human IL-15(Interleukin 15) ELISA Kit | 15.63--1000 pg/mL | 9.38 pg/mL | Sandwich |
| E-EL-H0088c | Human IL-1 α (Interleukin 1 Alpha) ELISA Kit | 3.91--250 pg/mL | 2.34 pg/mL | Sandwich |
| E-EL-H2450c | Human IL-21(Interleukin 21) ELISA Kit | 62.5--4000 pg/mL | 37.5 pg/mL | Sandwich |
| E-EL-H2338c | Human IL-27(Interleukin 27) ELISA Kit | 31.25--2000 pg/mL | 18.75 pg/mL | Sandwich |
| E-EL-H0101c | Human IL-4(Interleukin 4) ELISA Kit | 31.25--2000 pg/mL | 18.75 pg/mL | Sandwich |
| E-EL-H0048c | Human IL-8(Interleukin 8) ELISA Kit | 31.25--2000 pg/mL | 18.75 pg/mL | Sandwich |
| E-EL-H2665c | Human INS(Insulin) ELISA Kit | 0.78--50 μ IU/mL | 0.47 μ IU/mL | Sandwich |
| E-EL-H0050c | Human IP-10/CXCL10(Interferon Gamma Induced Protein 10kDa) ELISA Kit | 7.81--500 pg/mL | 4.69 pg/mL | Sandwich |

| Cat. No. | Product Name | Detection Range | Sensitivity | Test Method |
|-------------|--|-------------------|-------------|-------------|
| E-EL-H2239c | Human JAK2(Janus Kinase 2) ELISA Kit | 125--8000 pg/mL | 75 pg/mL | Sandwich |
| E-EL-H0093c | Human LEPR(Leptin Receptor) ELISA Kit | 0.31--20 ng/mL | 0.19 ng/mL | Sandwich |
| E-EL-H1628c | Human LGALS3(Lectin-Galactoside Binding Soluble 3) ELISA Kit | 0.78--50 ng/mL | 0.47 ng/mL | Sandwich |
| E-EL-H0116c | Human LH(Luteinizing Hormone) ELISA Kit | 0.94--60m IU/mL | 0.56 mIU/mL | Sandwich |
| E-EL-H0094c | Human LIF(Leukemia Inhibitory Factor) ELISA Kit | 31.25--2000 pg/mL | 18.75 pg/mL | Sandwich |
| E-EL-H1042c | Human LIFR(Leukemia Inhibitory Factor Receptor) ELISA Kit | 0.31--20 ng/mL | 0.19 ng/mL | Sandwich |
| E-EL-H0505c | Human MAP2K1(Mitogen Activated Protein Kinase Kinase 1) ELISA Kit | 0.16--10 ng/mL | 0.09 ng/mL | Sandwich |
| E-EL-H2403c | Human MCAM(Melanoma Cell Adhesion Molecule) ELISA Kit | 0.63--40 ng/mL | 0.38 ng/mL | Sandwich |
| E-EL-H1734c | Human MCL1(Myeloid Cell Leukemia Sequence 1) ELISA Kit | 0.16--10 ng/mL | 0.09 ng/mL | Sandwich |
| E-EL-H0020c | Human MCP-1(Monocyte Chemotactic Protein 1) ELISA Kit | 15.63--1000 pg/mL | 9.38 pg/mL | Sandwich |
| E-EL-H2413c | Human MCSP(Melanoma Associated Chondroitin Sulfate Proteoglycan) ELISA Kit | 0.16--10 ng/mL | 0.09 ng/mL | Sandwich |
| E-EL-H2422c | Human ME20M(Melanoma Associated ME20) ELISA Kit | 0.16--10 ng/mL | 0.09 ng/mL | Sandwich |
| E-EL-H2404c | Human MIA1(Melanoma Inhibitory Activity Protein 1) ELISA Kit | 7.81--500 pg/mL | 4.69 pg/mL | Sandwich |
| E-EL-H0027c | Human MIP-3 α (Macrophage Inflammatory Protein 3 Alpha) ELISA Kit | 15.63--1000 pg/mL | 9.38 pg/mL | Sandwich |
| E-EL-H1441c | Human MMP-1(Matrix Metalloproteinase 1) ELISA Kit | 0.16--10 ng/mL | 0.09 ng/mL | Sandwich |
| E-EL-H0134c | Human MMP-13(Matrix Metalloproteinase 13) ELISA Kit | 0.31--20 ng/mL | 0.19 ng/mL | Sandwich |
| E-EL-H1446c | Human MMP-3(Matrix Metalloproteinase 3) ELISA Kit | 0.16--10 ng/mL | 0.09 ng/mL | Sandwich |
| E-EL-H1449c | Human MMP-7(Matrix Metalloproteinase 7) ELISA Kit | 0.16--10 ng/mL | 0.09 ng/mL | Sandwich |
| E-EL-H1543c | Human MSLN(Mesothelin) ELISA Kit | 0.31--20 ng/mL | 0.19 ng/mL | Sandwich |
| E-EL-H0599c | Human MSM β (Microseminoprotein Beta) ELISA Kit | 0.31--20 ng/mL | 0.19 ng/mL | Sandwich |
| E-EL-H1655c | Human mTOR(Mammalian Target of Rapamycin) ELISA Kit | 0.16--10 ng/mL | 0.09 ng/mL | Sandwich |
| E-EL-H1386c | Human NF- κ B p105(Nuclear factor NF-kappa-B p105 subunit) ELISA Kit | 0.16--10 ng/mL | 0.09 ng/mL | Sandwich |
| E-EL-H0096c | Human NGAL(Neutrophil Gelatinase Associated Lipocalin) ELISA Kit | 0.16--10 ng/mL | 0.09 ng/mL | Sandwich |
| E-EL-H1205c | Human NGF(Nerve Growth Factor) ELISA Kit | 15.63--1000 pg/mL | 9.38 pg/mL | Sandwich |
| E-EL-H1893c | Human NPY(Neuropeptide Y) ELISA Kit | 31.25--2000 pg/mL | 18.75 pg/mL | Competitive |
| E-EL-H1343c | Human OC/BGP(Osteocalcin) ELISA Kit | 1.25--80 ng/mL | 0.75 ng/mL | Sandwich |
| E-EL-H1351c | Human ON(Osteonectin) ELISA Kit | 0.31--20 ng/mL | 0.19 ng/mL | Sandwich |
| E-EL-H1341c | Human OPG(Osteoprotegerin) ELISA Kit | 0.16--10 ng/mL | 0.09 ng/mL | Sandwich |
| E-EL-H1347c | Human OPN(Osteopontin) ELISA Kit | 0.31--20 ng/mL | 0.19 ng/mL | Sandwich |
| E-EL-H1270c | Human PARC/CCL18(Pulmonary Activation Regulated Chemokine) ELISA Kit | 78.13--5000 pg/mL | 46.88 pg/mL | Sandwich |
| E-EL-H1670c | Human PDGF-B(Platelet Derived Growth Factor Subunit B) ELISA Kit | 23.44--1500 pg/mL | 14.06 pg/mL | Sandwich |
| E-EL-H0985c | Human PDGFR β (Platelet Derived Growth Factor Receptor Beta) ELISA Kit | 0.16--10 ng/mL | 0.09 ng/mL | Sandwich |
| E-EL-H1875c | Human PEDF(Pigment Epithelium Derived Factor) ELISA Kit | 0.16--10 ng/mL | 0.09 ng/mL | Sandwich |
| E-EL-H2271c | Human PGR(Progesterone Receptor) ELISA Kit | 0.31--20 ng/mL | 0.19 ng/mL | Sandwich |
| E-EL-H1976c | Human PLAP/ALPP(Placental Alkaline Phosphatase) ELISA Kit | 0.16--10 ng/mL | 0.09 ng/mL | Sandwich |

| Cat. No. | Product Name | Detection Range | Sensitivity | Test Method |
|-------------|---|-------------------|-------------|-------------|
| E-EL-H1361c | Human PPAR- γ (Peroxisome Proliferator Activated Receptor Gamma) ELISA Kit | 0.16–10 ng/mL | 0.09 ng/mL | Sandwich |
| E-EL-H0141c | Human PRL(Prolactin) ELISA Kit | 1.56–100 ng/mL | 0.94 ng/mL | Sandwich |
| E-EL-H1196c | Human PRSS1(Protease, Serine, 1) ELISA Kit | 0.78–50 ng/mL | 0.47 ng/mL | Sandwich |
| E-EL-H2246c | Human PTPN11(Protein Tyrosine Phosphatase, Non Receptor Type 11) ELISA Kit | 0.16–10 ng/mL | 0.09 ng/mL | Sandwich |
| E-EL-H2400c | Human RANK(Receptor Activator of Nuclear Factor Kappa B) ELISA Kit | 0.16–10 ng/mL | 0.09 ng/mL | Sandwich |
| E-EL-H0119c | Human REN(Renin) ELISA Kit | 31.25–2000 pg/mL | 18.75 pg/mL | Sandwich |
| E-EL-H1721c | Human SCCA1(Squamous Cell Carcinoma Antigen 1) ELISA Kit | 78.13–5000 pg/mL | 46.88 pg/mL | Sandwich |
| E-EL-H2272c | Human sCD44(Soluble Cluster of Differentiation 44) ELISA Kit | 62.5–4000 pg/mL | 37.5 pg/mL | Sandwich |
| E-EL-H1299c | Human SCF(Stem Cell Factor) ELISA Kit | 31.25–2000 pg/mL | 18.75 pg/mL | Sandwich |
| E-EL-H0855c | Human SCG2(Secretogranin II) ELISA Kit | 1.25–80 ng/mL | 0.75 ng/mL | Sandwich |
| E-EL-H0930c | Human SHH(Hedgehog Homolog, Sonic) ELISA Kit | 78.13–5000 pg/mL | 46.88 pg/mL | Sandwich |
| E-EL-H1113c | Human SOD1(Superoxide Dismutase 1, Soluble) ELISA Kit | 62.5–4000 pg/mL | 37.5 pg/mL | Competitive |
| E-EL-H5540c | Human SPINK1(Serine Peptidase Inhibitor Kazal Type 1) ELISA Kit | 1.56–100 ng/mL | 0.94 ng/mL | Sandwich |
| E-EL-H2542c | Human SRD5a2(Steroid 5 Alpha Reductase 2) ELISA Kit | 78.13–5000 pg/mL | 46.88 pg/mL | Sandwich |
| E-EL-H1923c | Human SST(Somatostatin) ELISA Kit | 7.81–500 pg/mL | 4.69 pg/mL | Competitive |
| E-EL-H2197c | Human SSTR2(Somatostatin Receptor 2) ELISA Kit | 125–8000 pg/mL | 75 pg/mL | Sandwich |
| E-EL-H2014c | Human SYP(Synaptophysin) ELISA Kit | 31.25–2000 pg/mL | 18.75 pg/mL | Sandwich |
| E-EL-H1487c | Human TG(Thyroglobulin) ELISA Kit | 125–8000 pg/mL | 75 pg/mL | Sandwich |
| E-EL-H1654c | Human TH(Tyrosine Hydroxylase) ELISA Kit | 0.31–20 ng/mL | 0.19 ng/mL | Sandwich |
| E-EL-H0184c | Human TIMP-1(Tissue Inhibitors of Metalloproteinase 1) ELISA Kit | 0.16–10 ng/mL | 0.09 ng/mL | Sandwich |
| E-EL-H1453c | Human TIMP-2(Tissue Inhibitors of Metalloproteinase 2) ELISA Kit | 0.16–10 ng/mL | 0.09 ng/mL | Sandwich |
| E-EL-H0166c | Human TM(Thrombomodulin) ELISA Kit | 62.5–4000 pg/mL | 37.5 pg/mL | Sandwich |
| E-EL-H0217c | Human TNFRSF1A(Tumor Necrosis Factor Receptor Superfamily, Member 1A) ELISA Kit | 7.81–500 pg/mL | 4.69 pg/mL | Sandwich |
| E-EL-H2436c | Human TNFRSF1B(Tumor Necrosis Factor Receptor Superfamily, Member 1B) ELISA Kit | 7.81–500 pg/mL | 4.69 pg/mL | Sandwich |
| E-EL-H1142c | Human TRH(Thyrotropin Releasing Hormone) ELISA Kit | 7.81–500 pg/mL | 4.69 pg/mL | Competitive |
| E-EL-H2142c | Human TS/TYMS(Thymidylate Synthetase) ELISA Kit | 0.31–20 ng/mL | 0.19 ng/mL | Sandwich |
| E-EL-H5135c | Human TSHR(Thyroid Stimulating Hormone Receptor) ELISA Kit | 0.31–20 ng/mL | 0.19 ng/mL | Sandwich |
| E-EL-H2428c | Human TSPAN30/CD63(Tetraspanin 30) ELISA Kit | 0.16–10 ng/mL | 0.09 ng/mL | Sandwich |
| E-EL-H2312c | Human TWEAK(Tumour Necrosis Factor Related Weak Inducer of Apoptosis) ELISA Kit | 78.13–5000 pg/mL | 46.88 pg/mL | Sandwich |
| E-EL-H1665c | Human TYR(Tyrosinase) ELISA Kit | 0.63–40 ng/mL | 0.38 ng/mL | Sandwich |
| E-EL-H2378c | Human UBR4(Ubiquitin Protein Ligase E3 Component N-Recognin 4) ELISA Kit | 0.16–10 ng/mL | 0.09 ng/mL | Sandwich |
| E-EL-H5587c | Human VCAM-1/CD106(Vasculolar Cell Adhesion Molecule 1) ELISA Kit | 1.56–100 ng/mL | 0.94 ng/mL | Sandwich |
| E-EL-H1600c | Human VEGF-C(Vascular Endothelial Growth Factor C) ELISA Kit | 109.38–7000 pg/mL | 65.63 pg/mL | Sandwich |
| E-EL-H1603c | Human VEGFR-2/KDR(Vascular Endothelial Growth Factor Receptor 2) ELISA Kit | 78.13–5000 pg/mL | 46.88 pg/mL | Sandwich |
| E-EL-H2165c | Human VEGFR3/Flt4(Vascular Endothelial Cell Growth Factor Receptor 3) ELISA Kit | 0.16–10 ng/mL | 0.09 ng/mL | Sandwich |



网 址: www.elabscience.cn

电 话: 027-87526315

E-mail: techsupport@elabscience.cn tech@elabscience.cn

地 址: 武汉市东湖新技术开发区高新大道 858 号生物医药园二期 B18 栋